

MASS DEDICATIONS

MAY 27
5:00pm.....In Memory of April LaValley

MAY 28
8:30am..... In Memory of
Kenneth Prochaska
10:00am.....For Emmaus Parish
10:30am..... In Memory of Steve Kelly
12:15pm..... For Para la Adoracion del
Bendito Sacramento en Emaús
5:00pm.....In Memory of Steven Heller

MAY 29
8:30am.....For all who have died in
service of their Country

MAY 30
8:30am.....In Memory of Mary Lee Baker

MAY 31
5:30pm..... In Memory of
Tom & Beatrice Lucksinger

JUNE 1
8:30am..... In Memory of John Madden
9:30am..... In Memory of For Baldo Ceci

JUNE 2
8:30am..... In Memory of
K.L & Lucille Vernon

To request a special Mass intention for Emmaus Catholic Parish or Queen of Angels Chapel, contact the parish office, (512) 261-8500.

PARISH SUPPORT

Weekly Stewardship Report

May 21, 2017 \$57,478
Fiscal YTD Offertory \$1,891,851
Fiscal YTD Offertory [July 1, 2015 to June 30, 2016]..... \$2,109,362

2016-17 FYTD SEED Gift Card Program: \$32,605 profit

Parish Life Center Loan Balance:..... \$1,197,912
Church Loan Balance:..... \$3,975,000

Mortgage payments (principal/interest) on above loans: \$44,309/month

Second Collections at Emmaus

First Sunday of the Month: Benevolence
Fourth Sunday of the month: Parish Life Center

Next Special Collection:

Archdiocese for Military Services, May 28



eGiving = Secure Automatic Giving

eGiving provides an opportunity to simplify your stewardship donations through secure automatic giving. Choose the amount and the frequency of your donations. You may enroll online or download a form from the parish website, or contact the parish office for assistance.

Scan to Give

Did you know that you can make your regular offertory donation using your smart phone? Just use any QR Code reader to scan this code and complete your donation.



WEEKLY REFLECTION



May 28, 2017

The Feast of the Ascension

"I am praying for them..." John 17: 9

Prayer - the foundation of our Faith and the foundation of Stewardship. Pray in good times and in bad. Prayer is always the first best option in any situation. Pray for friends and family and for those that may not treat you very well. Pray to give praise, to thank and to ask God for help. Also, pray to see what God wants us to do.

Date Night Dinner Conference

English Session:

*Conflict Resolution:
A Pre-flight Checklist*

With Deana Reed, LPC.

Spanish Session:

No tienen vino" Jn. 2, 3 ¿Cómo solucionar problemas en pareja?

Facilitadores: Jose Juan Valdez, MA. CFES.
y Alba Iris Valdez, M.Ed.

Emmaus' Great Hall, \$40 per couple
Register online: EmmausParish.org

Childcare is available but reservations for childcare must be made by calling the Parish Office by Wednesday, June 7 at 4:00 PM.

Deana Reed, Licensed Professional Counselor, is the speaker for English session: *At times, the stress of life can become overwhelming or downright painful. Having someone to help you navigate this difficult season could be the answer to finding healing.* Ms. Reed has a Master of Arts in Professional Counseling and a Bachelor of Arts in Psychology, both from Texas State University.

WEEKLY CALENDAR

All items on the calendar are scheduled at Emmaus Catholic Parish with the exception of those marked as Queen of Angels. PLEASE NOTE: Changes may occur! Please refer to the Parish Website for the most current calendar listings.

SUNDAY, May 28 - 7th Sunday of Easter

10:30 AM	Monthly Celebration Blessing	QOA Chapel
2:30 PM	Lake Travis High School Baccalaureate	Church
3:30 PM	Baccalaureate Celebration	Great Hall

MONDAY, May 29 - Memorial Day Observed - Parish Office Closed

9:00 AM	Jazzercise	Café & Youth Space
12:00 PM	Alcoholics Anonymous	Pastoral B1

TUESDAY, May 30

8:00 AM	Jazzercise Early Session	Café & Youth Space
9:00 AM	Jazzercise	Café & Youth Space
9:30 AM	Follow Me: The Gospel of John	Multi B/C
12:00 PM	Al-Anon	Pastoral B1,B3,B4
5:15 PM	Jazzercise	Café & Youth Space
6:00 PM	Volunteer Legal Services	Rm. 203 & 204
6:00 PM	Women's CRHP Retreat Meeting	Church
6:30 PM	Follow Me: The Gospel of John	Multi B/C
7:30 PM	Legion of Mary	Rm. 206

WEDNESDAY, May 31 - The Visitation of the Blessed Virgin Mary

5:30 AM	Jazzercise Way Early Session	Café & Youth Space
8:00 AM	Jazzercise Early Session	Café & Youth Space
9:00 AM	Jazzercise	Café & Youth Space
4:45 PM	Confessions	Bride's Room
5:00 PM	Liturgy of the Hours Evening Prayer	Church
7:00 PM	Narcotics Anonymous	Pastoral B1
7:00 PM	CRHP Retreat Women's Group	Rm. 206

THURSDAY, June 1 - St. Justin

8:00 AM	Jazzercise Early Session	Café & Youth Space
8:00 AM	Men's Scripture Study	QOA Chapel
9:00 AM	Jazzercise	Café & Youth Space
10:00 AM	Game Day	QOA Chapel
10:00 AM	Rehearsal for Memorial Mass	Church
10:15 AM	Overeaters Anonymous	Rm 205
12:00 PM	Alcoholics Anonymous	Pastoral B1
5:15 PM	Jazzercise	Café & Youth Space
7:30 PM	Grupo De Oracion	Café & Youth Space

FRIDAY, June 2 - St. Marcellinus & St. Peter, First Friday

5:30 AM	Jazzercise Way Early Session	Café & Youth Space
6:00 AM	Men of Emmaus	Great Hall
8:00 AM	Jazzercise Early Friday	Café & Youth Space
9:00 AM	Jazzercise	Café & Youth Space
12:00 PM	Alcoholics Anonymous	Pastoral B1
7:00 PM	Divina Misericordia (Divine Mercy)	Café & Youth Space

SATURDAY, June 3 - St. Charles Lwanga & Companions, First Saturday

8:00 AM	Jazzercise Strength	Café & Youth Space
8:30 AM	Jazzercise	Café & Youth Space
4:00 PM	Confessions	Church
6:00 PM	Social Saturday Following Vigil Mass	Narthex

Parish Nursing Ministry

In the age of super-sizing, it's all too easy to misjudge portion sizes. WebMD has created some easy guidelines to help you figure out how many servings are on your plate — and they are in a handy wallet size so you can keep them with you when you are dining out. Cut out and fold on the dashed line. You may want to laminate or tape for lasting use. SOURCE: Kathleen Zelman, MPH, RD, LD, Director of Nutrition for WebMD, healthyeating.webmd.com © 2008 WebMD, LLC. All rights reserved.



WebMD Portion Size Guide

<p>BASIC GUIDELINES</p> <ul style="list-style-type: none"> 1 cup = baseball ½ cup = lightbulb 1 oz or 2 tbsp = golf ball 1 tbsp = poker chip 3 oz chicken or meat = deck of cards 3 oz fish = checkbook 	<p>GRAINS</p> <ul style="list-style-type: none"> 1 cup of cereal flakes = baseball 1 pancake = compact disc ½ cup cooked rice = lightbulb ½ cup cooked pasta = lightbulb 1 slice bread = cassette tape 1 bagel = 6 oz can of tuna 3 cups popcorn = 3 baseballs 	<p>DAIRY & CHEESE</p> <ul style="list-style-type: none"> 1 ½ oz cheese = 3 stacked dice 1 cup yogurt = baseball ½ cup of frozen yogurt = lightbulb ½ cup of ice cream = lightbulb
<p>FRUITS & VEGETABLES</p> <ul style="list-style-type: none"> 1 medium fruit = baseball ½ cup grapes = about 16 grapes 1 cup strawberries = about 12 berries 1 cup of salad greens = baseball 1 cup carrots = about 12 baby carrots 1 cup cooked vegetables = baseball 1 baked potato = computer mouse 	<p>MEATS, FISH & NUTS</p> <ul style="list-style-type: none"> 3 oz lean meat = deck of cards 3 oz fish = checkbook 3 oz tofu = deck of cards 2 tbsp peanut butter = golf ball 2 tbsp hummus = golf ball ¼ cup almonds = 23 almonds ¼ cup pistachios = 24 pistachios 	<p>MIXED DISHES</p> <ul style="list-style-type: none"> 1 hamburger (without bun) = deck of cards 1 cup fries = about 10 fries 4 oz nachos = about 7 chips 3 oz meatloaf = deck of cards 1 cup chili = baseball 1 sub sandwich = about 6 inches 1 burrito = about 6 inches

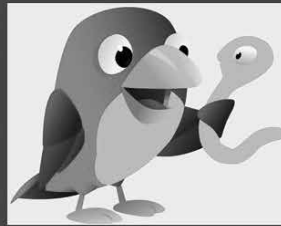
WebMD Portion Size Guide

HAPPENINGS AT EMMAUS

Faith Formation

Discounted Early Bird Rates!

EARLY BIRD On-Line REGISTRATION



www.EmmausParish.org

by May 31, 2017

ELEMENTARY—JOURNEY—OUTCRY

Vacation Bible School is filling fast. Please register on the Parish Website for this fabulous week of fun: www.EmmausParish.org/VBS. Volunteers are needed. VBS is the week of June 26-30. Fee per camper is \$50 with a maximum of \$125 for a family. Campers can be pre-K through 6th grade (Fall 2017).

All Vacation Bible School volunteers must attend 1 mandatory training. Those age 18+ must be EIM certified. VBS Training dates for Youth Volunteers are:

- Sunday, June 11, 1:30-3:00 PM
- Wednesday, June 14, 6:00-7:30 PM
- or Wednesday, June 21, 6:00-7:30 PM

Parish Office will be closed on Monday, May 29, in observance of Memorial Day. The office will reopen at 9:00 AM on Tuesday, May 30.

Everyone is invited to Social Saturday! It is strictly social: just relax and enjoy visiting with fellow parishioners, while sipping a glass of wine or a beer. Yummy snacks available too! Join us in the narthex following the Saturday 5 PM Mass on June 3.

Farewell Celebration for Sr. Elizabeth: We will celebrate Sr. Elizabeth Guerrero, MCDP, on Sunday, June 18 at 1:15 PM in the Great Hall. All are welcome! Please bring a dish to share.

Farewell Celebration for Harry Kilman: We are celebrating Harry & Joyce Kilman on Saturday, June 24 at 6:00 PM in the Great Hall. Please bring an appetizer to share and wear a Hawaiian shirt! All are invited.

“AGED TO PERFECTION” LUNCHEON: Emmaus is hosting an “Aged to Perfection” luncheon on June 7 at 11:00 AM. This is for parishioners on both church campuses who will be 80 years old and over by that date. We do not want to leave anyone out of this year’s marvelous event! However, our parish database may not have the correct date of birth for some of our senior parishioners. If you are “perfected” and have not received an invitation in the mail, **please** call the parish office at 512-261-8500 to sign up and RSVP for this fun event.

EIM Workshop at Emmaus

Saturday, June 10, 2017

9:00 AM – Emmaus PLC Great Hall



Nursery available if requested 72 hours in advance. Please call the parish office to reserve the nursery.

REGISTER ONLINE with the Diocese of Austin.

Begin at: www.EmmausParish.org/EIM

Emmaus Early Childhood Education Program is currently accepting applications for lead and assistant teaching positions for the fall 2017-18 school year. Please email preschool@emmausparish.org, if interested in applying.

Gretchen’s Farewell

For the last 5 years, Gretchen Reynolds has served the Emmaus parishioners as the Director of Parish Accounts. She coordinated our EFT program and SEED program. She was the bookkeeper for our Early Childhood and the Faith Formation programs. She was an integral part of the administration team that created and managed our Capital Campaign, Count On Me campaigns, Galas and Fall Fests. Gretchen also started the Welcome & Registration events and coordinated all weddings at Emmaus - no small task.

Gretchen’s last day working for Emmaus is Friday, June 2nd. She has accepted another position in the Lakeway area so, thankfully, she and her family will remain active in our parish and their many volunteer activities. We are deeply saddened to see her leave our staff. She excels at all her efforts and laughs along the way. She has been a tremendous support to all of the staff because of her positive attitude and strong work ethic. Emmaus Parish has grown in our stewardship and welcoming ministries because of Gretchen. We remain forever grateful.

Gretchen, we wish you the best because that is what you gave us!

Could you not watch one hour with me? Mark 14:37
¿No pudiste velar ni por una hora? Marcos 14:37



Saint Pope John Paul II, opened a chapel of Perpetual Eucharistic Adoration with Jesus in the Most Blessed Sacrament exposed in a monstrance in Saint Peter's Basilica on December 2, 1981. In his opening prayer, *Stay with us, Lord*, the Pope urged all parishes to begin Perpetual Eucharistic Adoration.

Jesus chose the desert as a place to pray in solitude. He fought temptation, the temptations of the devil himself. He taught us how to be victorious over temptation. We must desire victory over temptation. Call upon the Lord to help you fight temptation, any temptation and every temptation.

Often we crowd-out the opportunity to be victorious for Christ. We allow 'my schedule', 'my time', 'my life' to come before the voice of Christ which says, "Come to Me". When we permit this, temptation wins. Think about it! Pray as St. Augustine prayed: *God, give me the grace to triumph over my enemy, temptation.* Desire victory. Go for it!

Did you know that we used to have daily Mass in the original dining room of the Dr. Houle home? That area is now the faith formation offices. This was also where we had our first 24 Hour Adoration of the Blessed Sacrament. It began with

a simple announcement in the bulletin on November 21, 1999, The Solemnity of Christ the King: *24 Hour Devotion to the Blessed Sacrament will begin at the Emmaus Chapel Friday, December 3, after the 9:00 AM Mass and continue through Saturday December 4.*

Please prayerfully reflect if you can commit one hour a week to coming to visit with Jesus in the Blessed Sacrament. You can contact us any time at liturgy@emmausparish.org or just call the Parish Office.

Mrs. O'Brien's Guide to the Golden Rule:

Family friendly, Catholic comedy by the author of *Late Nite Catechism* will be here at Emmaus on July 21 at 7:00 PM in the Great Hall. Tickets are \$25 per person and are available at the parish office or online, www.EmmausParish.org.

Volunteer Legal Services: Emmaus Catholic Parish has partnered with Volunteer Legal Services of Austin to present a FREE LEGAL CLINIC for persons seeking legal assistance on the last Tuesday of each month, 6-8 PM in the PLC classrooms. Next evening of legal assistance is Tuesday May 30, in classrooms 203 and 204.

EMMAUS THANKS YOU!



We send a huge congratulations to all of the students in the English as a Second Language program (ESL)! Thank you for all of your efforts and for the tireless work. A special thanks goes to the teachers of this program that worked all year long also.

Congratulations & Thank you!

PRAYER REQUESTS

Kathleen Mikula, Christina Martin, Kellye Scallon, Wanda Tracy, La Familia Cortez - Maguillan, Silvia Barcenas, Joe Moya, Amy Stapleton, Philomena Rowlands, Jana Roberts, Ed Marcin, James Finnen, Holley Eguileor, Karen Ikonomopoulos, Irma Lopez, The Poussiet Family, Meggan Matthyssen, Maria Muñoz, The Lloyd Patrick Family, Ernest Altgelt, Paola Narvaez, Alejandra Moreno, The Moreno Family, Dorothy Indermark

SUPPORT OUR BULLETIN SPONSORS

Support your parish and advertise at the same time: the parish bulletin goes home to 800 households every week! Contact Thomas Miner at 512-452-3413 if you are interested in advertising in this bulletin.

We thank our Bulletin Sponsor:

Lakeway Dermatology

www.lakewaydermatology.com | 512-263-0057

Para noticias en español, por favor recoja un boletín de *La Voz de Emaús* noticias disponible en los revisteros al lado de la sacristía en la iglesia.

28 de mayo de 2017 - La Ascensión Del Señor

"Ruego por ellos..." Juan 17:9

La oración - la base de nuestra Fe y la base del espíritu de servicio. Ore en buenos y malos momentos. La oración siempre es la mejor opción en cualquier situación. Ore por sus amigos y familia y por aquellos que no lo han tratado muy bien. Ore para adorar, para agradecer y para pedirle ayuda a Dios. También ore para saber lo que Dios quiere de usted.

• • •

Las Preguntas Más Frecuentes De la Parroquia de Emaús

¿INTERESADO EN SER CATÓLICO? Para los adultos interesados en aprender más acerca de convertirse Católico a través de RICA, visite el sitio web de la parroquia o llame a la oficina parroquial.

¿NUEVO A LA PARROQUIA? Escriba a newcomer@emmausparish.org o llame a la oficina parroquial para registrarse para asistir a un evento de Bienvenida y Registro.

PREPARACIÓN PARA LOS SACRAMENTOS: Para obtener más información acerca de la preparación sacramental para el Bautismo, la Reconciliación, la Eucaristía (Comunión), la Confirmación, o Matrimonio, visite el sitio web de la parroquia o llame a la oficina parroquial.

ROSARIO (en inglés) se reza a las 9 AM, de lunes a viernes en Emaús, a las 4:20 PM los sábados en Emaús, y a las 9:15 AM los domingos la capilla Reina de los Ángeles.

LA ADORACION CHAPEL esta disponible a la 24 horas. Para anotarse para las horas disponibles visite emmausparish.org/adoration.

OFICINA PARROQUIAL: (512) 261-8500; Lunes-Viernes, 9 AM-4 PM

GUARDERÍA (CUIDADO DE NIÑOS): La Guardería está disponible en Emaús para las Misas de Domingo 8:30 AM, 10:30 AM y 24:15. La guardería puede estar disponible para otros eventos particulares si esta anunciado, y un número mínimo de niños están registrados. Para estos tipos de eventos particulares, usted debe solicitar específicamente el cuidado de su niño(s) llamando a la oficina de la parroquia al menos 72 horas de anticipación.

FECHA TOPE PARA BOLETÍN: viernes, a las 12 del mediodía, escriba a communications@emmausparish.org.

ANUNCIOS: jueves, a las 12 del mediodía, escriba a communications@emmausparish.org.

OBJETOS PERDIDOS (Lost & Found) en Emaús se encuentran en la cornisa en el

lado izquierdo del nártex (cerca de la mesa donde se venden las tarjetas de regalos). Los objetos de valor se llevan a la oficina parroquial.

DISPOSITIVOS DE AYUDA AUDITIVA están disponibles para su uso durante la misa. Levante uno en la sacristía.

FLORES PARA EL ALTAR/DEDICACIONES EN LA MISA: Para pedir flores para el altar o para dedicar Misas en Emaús o la capilla Reina de los Ángeles, por favor llame a la oficina parroquial.

OPORTUNIDADES DE AYUDA: Si conoces a alguien que está batallando y necesita nuestro apoyo, o le gustaría recibir la Santa Comunión en su casa, por favor llame a la oficina parroquial. Una lista completa de recursos sociales está disponible en el sitio web.

EL MINISTERIO RESPETO A LA VIDA de Emaús está comprometido a la preservación de la vida humana y el espíritu humano a través de la educación sobre temas y programas de Respeto a la Vida. Como parte de Respeto a la Vida, el Proyecto Gabriel asiste con embarazos en crisis, y el Proyecto Rachel ofrece esperanza y sanación después del aborto. Más información está disponible en la página web o comunicándose con la oficina de la iglesia.

PARA HABLAR CON UN SACERDOTE, por favor llame a la oficina parroquial.

PARA SOLICITAR LA EUCARISTÍA para una hospitalaria o para personas que se encuentran confinadas en su casa, por favor llame a la oficina parroquial. Le pedimos que espere 48 horas para que se hagan los arreglos.

NOTICIAS DE ÚLTIMA HORA EN ESPAÑOL DE EMAÚS ¿Sabía usted que puede ver la página web de Emaús en español? Visite emmausparish.org. En la parte inferior de cada página hay un enlace para ver la página en español.

¿EMBARAZADA? ¿Necesitas ayuda? Proyecto Gabriel: 1-877-932-2732

Del 27 al 29 de Julio, la Diócesis de Austin será la anfitriona de la Conferencia de Músicos Pastorales Hispanos cuyo tema lleva por nombre Misa, Música y Misión: Cantando la Buena Nueva. Únanse a nosotros en la Preparatoria Católica St. Dominic Savio (9300 Neenah Ave, Austin, 78717) para profundizar en su conocimiento de la Misa, la excelencia en el ministerio y las habilidades musicales. Existe una inscripción con descuento para participantes de la Diócesis de Austin. Para mayor información, visite www.austindioeces.org/hpmmc.

Estudio Bíblico - Evangelio de Juan

Facilitador: Jose Juan Valdez. Martes a las 7:45 PM, el 6 de Junio de 18 de Julio, en el Salon Multi B/C. Donación para materiales: \$20. Inscribese en el sitio web de la parroquia: www.EmmausParish.org/AdultFaith

FREQUENTLY ASKED QUESTIONS

parish website or call the parish office.

NEW TO THE PARISH? Email newcomer@emmausparish.org or call the parish office to register to attend a Welcome & Registration Event. Next Welcome Event is Sunday, July 9, 2017, at 9:45am in Great Hall.

SACRAMENTAL PREPARATION - To learn more about Sacramental preparation for Baptism, Reconciliation, Eucharist, Confirmation, or Marriage, visit the parish website or call the parish office.

THE ROSARY is prayed at 9:00 AM, Mondays, Tuesdays, Thursdays and Fridays at Emmaus, 8:30 AM on Wednesdays at Emmaus, 4:20 PM on Saturdays at Emmaus, and at 9:15 AM on Sundays at Queen of Angels.

THE ADORATION CHAPEL is open 24 hours / 7 Days a week. You may visit at any time. The Blessed Sacrament is exposed from 5 AM to 10 PM. To sign up for available hours, visit emmausparish.org/adoration. New Adorers are most welcome.

PARISH OFFICE: (512) 261-8500; Monday-Friday, 9 AM-4 PM

NURSERY: The Nursery is available at Emmaus for the Sunday 8:30 AM, 10:30 AM, and 12:15 PM Masses, except on holiday weekends. The nursery may be available for other designated parish events if advertised and a minimum number of children are registered. For such designated events, you must specifically request childcare by calling the parish office at least 72 hours in advance.

ASSISTIVE LISTENING DEVICES are available for your use during Mass. Pick one up in the sacristy.

ALTAR FLOWERS/MASS DEDICATIONS: To order altar flowers or to dedicate Masses at Emmaus or Queen of Angels, please call the parish office. To request more than one Mass Intention, please stop by the office in person.

BULLETIN DEADLINE: Fridays (10 days in advance), 12 noon, communications@emmausparish.org

MASS ANNOUNCEMENTS: Thursdays, 12 noon, communications@emmausparish.org

LOST AND FOUND at Emmaus is located on the ledge at the left hand side of the narthex (near the SEED table). Any valuable items are taken to the parish office.

OUTREACH OPPORTUNITIES: If you know someone who is struggling and could use our support, or would like to receive Holy Communion in their home, please call the parish office. A complete listing of Social Outreach offerings is available on the website.

EMMAUS' RESPECT LIFE MINISTRY is committed to the preservation of human life and the human spirit through education on Respect Life issues and programs. As part of Respect Life, the Gabriel Project assists with Crisis Pregnancies, and Project Rachel provides hope and healing after abortion. Further information is available on the website or by contacting the parish office.

TO MEET WITH A PRIEST, to request Anointing or a visit for an ill loved one, or to arrange a blessing of a pregnancy or your home, please call the parish office.

TO REQUEST EUCHARIST for the facility- or homebound, please call the parish office. We ask that you allow 48 hours for arrangements to be made.

LADIES OF CHARITY: (512) 791-5750

LAKE TRAVIS CRISIS MINISTRIES: (512) 266-9810

ST. VINCENT DE PAUL SOCIETY: (512) 576-1744

PREGNANT? Need Help? Gabriel Project: 1-877-932-2732